

ThermaView II: real-time welder diagnostics

This new diagnostic system is designed to graphically display weld process parameters in real-time including kw output, weld frequency and impedance matching.

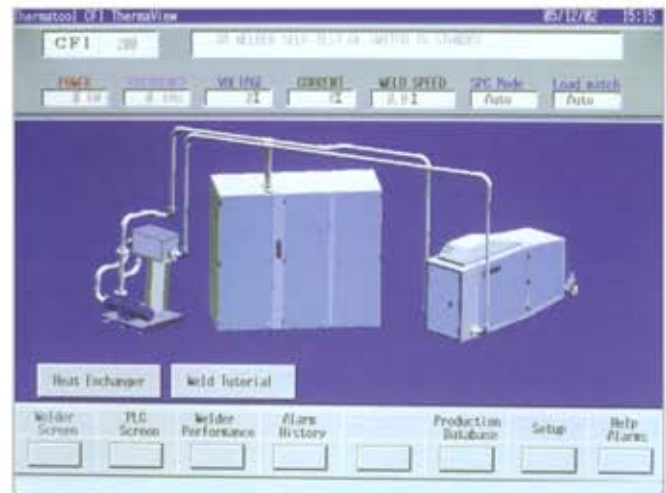
Also a powerful preventative maintenance tool, ThermaView provides easy-to-use trouble shooting indicators. By displaying operational and historical trending for a set of weld parameters, ThermaView can also provide an early warning of those conditions that could result in a system shutdown if not quickly corrected.

ThermaView II provides easy-to-use trouble shooting indicators. In the event there is a fault, diagnostic help screens describe its nature, its possible cause, and the recommended corrective action. ThermaView can also provide an early warning of fault conditions that could result in a system shutdown.

ThermaView can now be remotely accessed via a suitable Ethernet or Modern connection making real-time remote diagnostics a reality. Remote access also facilitates 24/7 welder performance monitoring for Statistical Process Control (SPC) applications

ThermaView II Features:

- Remote welder diagnostics
- Easy troubleshooting and preventative maintenance
- Welding tutorial and tooling database included
- Console, pendant station or as individual components
- Multi-lingual graphic display available



Thermatool Corp.,
31 Commerce St.,
East Haven, CT 06512

For more information, call 203/468-4100, email: thermatool@ttool.com or visit www.thermatool.com

©2009 Thermatool Corp. All Rights Reserved. 100 06/09 LITHO IN U.S.A. BULLETIN TV